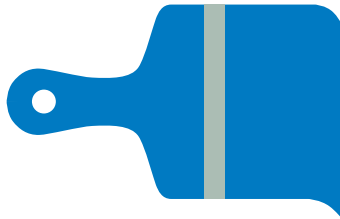


# Flex Center custom-colored enclosures



The demand for customizable solutions continues to rise as architects, designers and customers place emphasis on overall aesthetics, details and durable, quality finishes—and the appearance of electrical equipment is no exception.

Eaton's Flex Center custom-colored enclosures help residential and light commercial builders deliver the precise aesthetic look that their customers desire in a cost-effective manner.

With a palette of 188 quick-ship color options, design inspirations are not compromised by standard ANSI grey or galvanized steel loadcenters. For installations where electrical equipment is visible or projects where precise colors are specified for enclosures, contractors are no longer forced to hand paint or spray paint loadcenters, which is time-intensive and can lead to overspray and poor paint penetration. Eaton's factory powder-coated, custom-color solutions provide a durable, high-quality alternative while reducing labor and installation costs.

Eaton's custom-colored enclosures provide contractors a simple, cost-effective way to meet their customers' design requirements. Customers can also rest easy, knowing that Eaton's paint finish is covered against bubbling and peeling for the life of the product.



#### Features of Eaton's Flex Center custom-colored enclosure capabilities

- 188 quick-ship colors offer flexibility and ease of matching to common architectural colors
- Color-matching services make the enclosures truly custom, capable of matching any architectural wall paint colors
- Factory painting eliminates the need for expensive, time-consuming on-site painting
- Industrial powder-coating process provides a quality finish superior to hand-painted work



*Powering Business Worldwide*

**PROUDLY FINISHED WITH**  
**SHERWIN-WILLIAMS.**



**Eaton's Flex Center custom-colored enclosures are ideal for projects where durability and aesthetic appeal are key**

- Residential single-family home building
- Residential multi-family building and management
- Residential renovation
- Light commercial construction
- Government projects and installations



For ordering or additional information, please visit  
[Eaton.com/customcolors](http://Eaton.com/customcolors),  
[FlexCenterLincoln@eaton.com](mailto:FlexCenterLincoln@eaton.com)  
or contact 800-330-6479

**Eaton**  
1000 Eaton Boulevard  
Cleveland, OH 44122  
United States  
[Eaton.com](http://Eaton.com)

© 2015 Eaton  
All Rights Reserved  
Printed in USA  
Publication No. PA003010EN / Z16521  
April 2015

Follow us on social media to get the latest product and support information.



Eaton is a registered trademark.

All other trademarks are property of their respective owners.

**EATON**  
*Powering Business Worldwide*

**PROUDLY FINISHED WITH**  
**SHERWIN-WILLIAMS.**